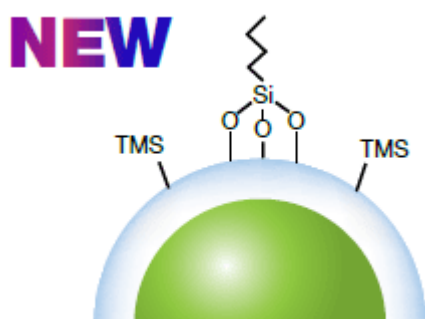


What gets a scientist excited? A shiny new column in their lab! Phenomenex researchers and scientists have been busy in our labs developing a new tool that will help get scientists excitedly anxious to get back to their labs. We are happy to introduce the newest wider pore bioZen LC column to the portfolio: bioZen™ 2.6 µm WidePore C4.



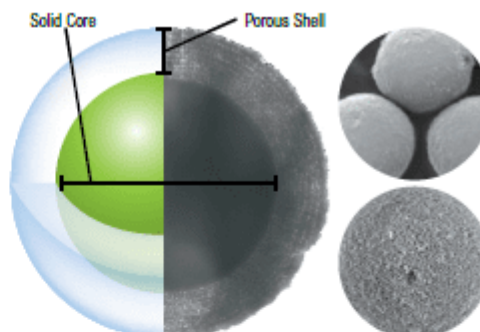
## bioZen WidePore C4 2.6 µm

Core-shell particle with butyl stationary phase and optimal wide pore size distribution for better resolution of large biologics, including monoclonal antibodies and subunit analysis.

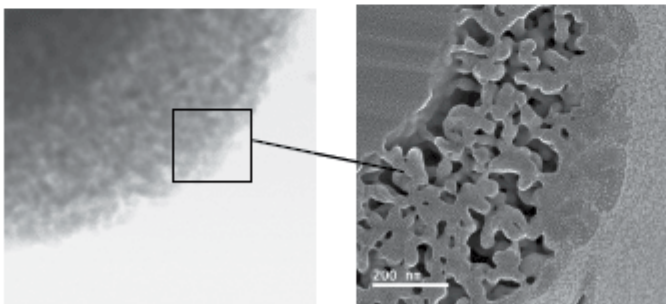
This new technology offers increased resolution with its core-shell column technology combined with the bioinert technology that is expected with the bioZen portfolio. It offers a robust surface grafting and optimal particle and pore size morphology ensures high reproducibility for analytical methods.

### Core-Shell Advantage

For an **increase in resolution**, along with faster and **more consistent results**, our scientists create a durable, homogeneous spherical porous shell **uniformly** grown on a solid silica core.

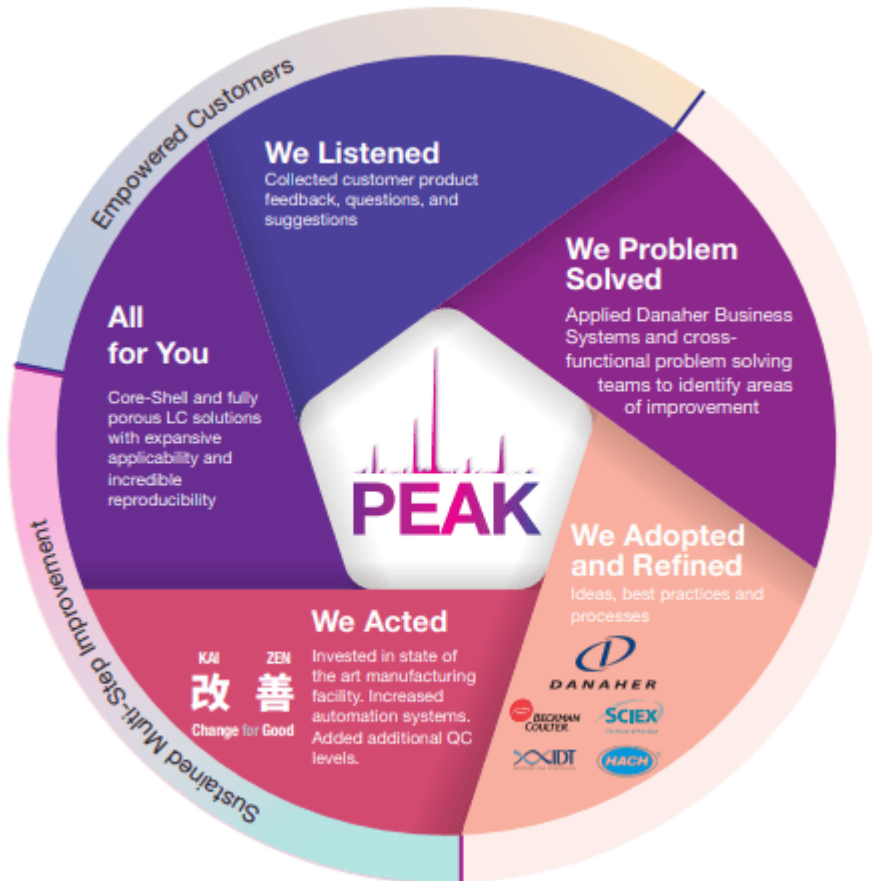


### Controlled Wide Pore Technology

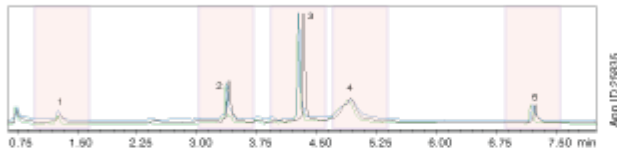


A **wider pore LC column** (~400Å) allows for better separation of large biologics and with a **controlled manufacturing process**, bioZen WidePore introduces a new solution for analyzing intact and subunit mAbs.

Along with this new bioZen chemistry, we combined it with a new advanced process optimization to provide products that deliver very high levels of performance and newly achievable levels of reliability and reproducibility. This new advanced series of products and process optimization is called PEAK. Click the image below to learn more:



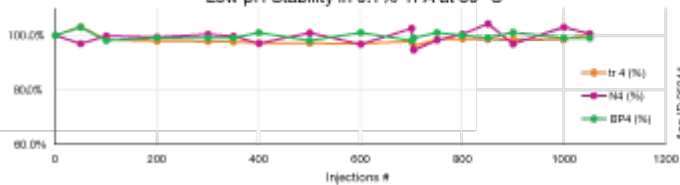
**Excellent  
Batch-to-Batch Consistency**



**LC Conditions**  
**Column:** bioZen™ 2.6 µm WidePore C4  
**Dimensions:** 100 x 2.1 mm  
**Part No.:** 000-4786-AN  
**Mobile Phase:** A: 0.1 % TFA in Water  
 B: 0.1 % TFA in Acetonitrile  
**Gradient:** 25-60 % B in 5 minutes  
**Flow Rate:** 0.3 mL/min  
**Temperature:** 60 °C  
**Detection:** UV @ 280 nm  
**Sample:** 1. RNase A (13.7 kD)  
 2. Cytochrome C (12 kD)  
 3. Lysozyme (14.3 kD)  
 4. Holotransferrin (76-81 kD)  
 5. Apomyoglobin (16 kD)

**Excellent Robustness**

Low pH Stability in 0.1% TFA at 80 °C



**LC Conditions**  
**Column:** bioZen 2.6 µm WidePore C4  
**Dimensions:** 100 x 2.1 mm  
**Part No.:** 000-4786-AN  
**Mobile Phase:** A: 0.1 % TFA in Water  
 B: 0.1 % TFA in Acetonitrile  
**Gradient:** 15-55 % B in 10 minutes  
 (total run time 20 minutes)  
**Flow Rate:** 0.8 mL/min  
**Temperature:** 80 °C  
**Detection:** UV @ 280 nm  
**Sample:** Trastuzumab

Not only are we providing you a wider pore core-shell particle, but added reliability to provide you with an extra splash of ZEN into your lab. Learn more about our newest wider pore bioZen LC column: bioZen WidePore C4, by visiting: [www.phenomenex.com/bioZenWidePore](http://www.phenomenex.com/bioZenWidePore)

And don't forget to explore the rest of our bioZen portfolio. With a new titanium hardware to minimize priming, three particle platforms for optimal versatility and eight particle chemistries to maximize selectivity and sensitivity, bioZen UHPLC/HPLC columns are seamlessly designed to bring peace of mind to your next analysis.

Whether you are working with novel proteins or biosimilars, bioZen UHPLC columns are guaranteed to help you achieve a new state of Zen for your mind, body, soul, and lab. Click

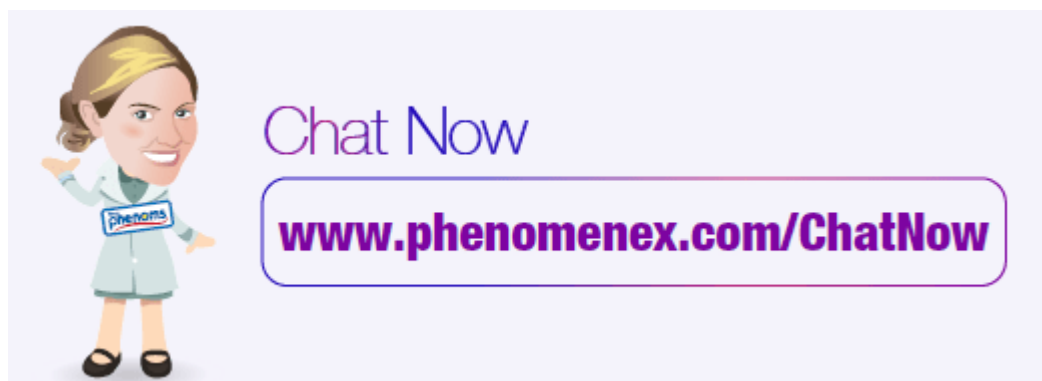
the link to start exploring today: [www.phenomenex.com/bioZen](http://www.phenomenex.com/bioZen)

---

Have any questions about our wider pore bioZen LC column, large molecule analysis, or any other technical inquiries? Chat with our Technical Specialists today through our free online service, Chat Now.

They are available 24/7 globally and here to help to set up your method with bioZen WidePore C4, along with other method optimization, product recommendations, and provide quotes for an easier purchasing journey.

Click the link to start chatting today: [www.phenomenex.com/Chat](http://www.phenomenex.com/Chat)



Share with friends and coworkers:

- [Click to email this to a friend \(Opens in new window\)](#)
- [Click to share on Twitter \(Opens in new window\)](#)
- [Click to share on Facebook \(Opens in new window\)](#)
- [Click to share on Pinterest \(Opens in new window\)](#)
- [Click to share on LinkedIn \(Opens in new window\)](#)
- [Click to share on Tumblr \(Opens in new window\)](#)
- [Click to share on Reddit \(Opens in new window\)](#)